

Great Park Academy



Great Park Academy

'Create Your Future'

Information for Parents and Carers
of Year 5 Children

School Year 2023 – 2024

Knightsbridge, Great North Road, Gosforth, Newcastle, NE3 2JH

Tel: 0191 2559170

Email: admin@greatparkacademy.org.uk

Contents

Page	
2	Principal of Great Park Academy Letter to Parents/Carers
3	Great Park Academy Senior Management Structure
4	Great Park Academy Support
5	Road Safety
6	Your Child's First Day
7-8	Daily Routine
9-10	School Uniform
11	How Is Achievement Rewarded?
12	Learning & Behaviour
13	Home – School Agreement
14-21	Other Important Information
22	Attendance Pyramid
23-24	Medication in School
25	Dates of School Terms and Holidays 2023 - 2024
26	Location Map & contact details

Dear Parents / Carers

Welcome to Great Park Academy.

Our philosophy is that we want to develop well rounded individuals who are confident, resilient, emotionally intelligent and independent.

We work in close partnership with parents and carers for the benefit of the children and have established a caring, friendly and supportive atmosphere. With your help, we can do much to ensure that the years spent by your child in the Great Park Academy are both happy and successful.

Along with our partner schools, we form The Gosforth Group. This Multi Academy Trust approach brings many benefits, which include:

Extended breadth and quality of provision

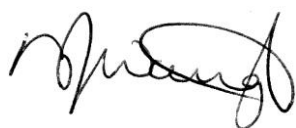
The capacity and ability to respond better to all children's needs

Shared management responsibility and curriculum expertise

Widening the impact of our strongest leaders, teachers, support staff and Local Advisory Groups

Widening opportunities for collaborative professional development

Regards



D Waugh
Principal of Great Park Academy

GREAT PARK ACADEMY

SENIOR MANAGEMENT STRUCTURE OF GREAT PARK ACADEMY

CEO of The Gosforth Group

Hugh Robinson

Principal of Great Park Academy

Denise Waugh

Assistant Principal

Katherine Billingsley

THE GOVERNING BODY

If you wish to contact the Academy Advisory Group please write to:-

Chair of Academy Advisory Group
c/o Great Park Academy
Knightsbridge
Great North Road
Gosforth
Newcastle
NE3 2JH

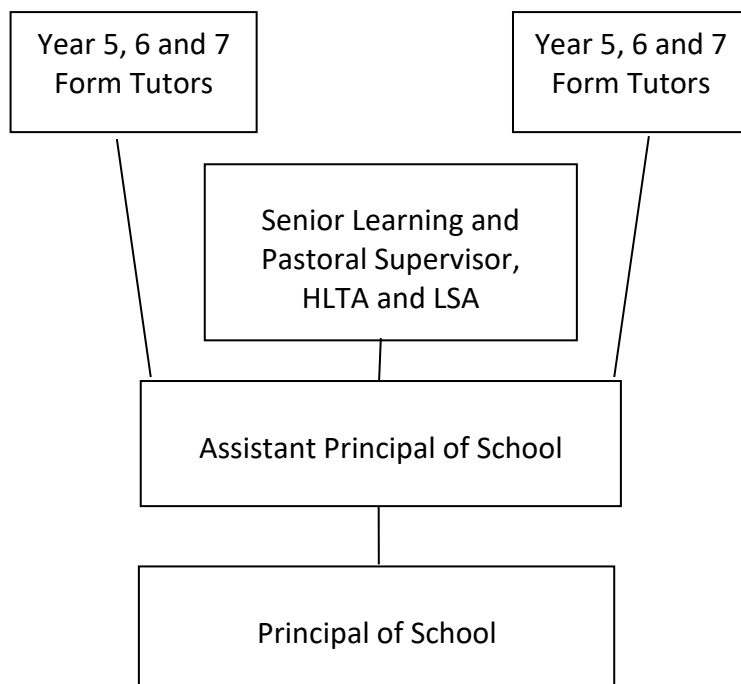
GREAT PARK ACADEMY SUPPORT

Pastoral Care

In our school we get to know your children well. By encouraging the sort of staff-child relationship which allows frank and open dialogue, children form special relationships with some of their teachers and support staff and sometimes small problems are picked up and sorted out quite informally.

The Form Tutors, who are responsible for daily registration of children in their forms are usually the best first point of contact for parents/carers wishing to discuss issues regarding their children.

FLOW DIAGRAM SHOWING CONTACTS FOR PARENTS/CARERS REGARDING THE PASTORAL CARE OF CHILDREN



We have a Senior Learning and Pastoral Supervisor, HLTA and LSA who play a very important role in supporting both the academic and pastoral needs of the children.

Please note that appointments must be made, if parents/carers wish to have a meeting with a member of staff, except in emergency situations. This is because we can not guarantee that a particular staff member can be available due to wide-ranging commitments within school. Please contact the reception if you wish to make an appointment.

ROAD SAFETY

Remember, children are not always aware of the dangers and therefore parents and carers must be!

- Please do not park on double yellow lines or on the pavement.
- Please encourage your child to use the pedestrian crossings.
- If collecting your child from the car park area, **park and leave your car in a designated parking area and personally meet your child outside the school building.** Do not park in bays reserved for the disabled unless you have permission. Do not encourage your child to walk unsupervised across the car park.
- In the interests of the environment, please switch off engines whilst waiting in the car park.

WALKING TO AND FROM SCHOOL

As children get older, inevitably, as parents/carers we start to make judgements about developing their independence. One of the ways you may consider is to allow your child to walk to and from school on occasions. You may even have thought of a mixture of your child walking and you delivering and collecting.

We recommend that younger children do not walk to and from school on their own. If you do intend to allow your child to walk to and/or from school unaccompanied by an adult, we suggest that you walk the route with your child so they get accustomed to it and any associated road safety issues.

YOUR CHILD'S FIRST DAY

All children will start the new academic year at 8.25am on Tuesday 5 September 2023 and should be on the school premises no later than 8.15am. We ask that parents do not remain with their child. Our staff will greet you and receive your child and settle him/her into school.

Break will take place at 10.30am.

Lunchtime is from 11.40am to 12.30pm and children are escorted to lunch for the first few days until they become familiar with the system.

3.00pm - school ends for Year 5 children and they can be collected from the main gate. If you wish to collect your child by car, please use our car park.

- * During the first week, the children will become more familiar with the building, the staff and the general day to day organisation of the school.
- * If children are unsure about anything, they can ask any member of staff for help. Usually they approach their form tutor, whom they already know.

Please note that the normal school day runs from 8.25am (morning registration) until 3.00pm for Year 5 children.

Children are expected to be on the school premises, no later than 8.15am.

On the final day of each term, school closes at 12 noon.

Late Arrivals

Morning registration takes place at 8.25am. We appreciate that some children travel longer distances, relying on public transport over which they have little control. We do not wish to penalise such children for lateness beyond their control, but we believe that young people should appreciate the importance of punctuality. Each case of lateness will be carefully considered to see if it could have been avoided and appropriate sanctions will be given if considered necessary. All late-comers must report to their form teacher before 8.50am; after 8.50am children must report to the reception to sign in. Only then will a registration mark be given.

DAILY ROUTINE - THE SCHOOL DAY FOR YEAR 5

8.25am – 8.50am	Morning Registration
8.50am – 9.40am	Lesson 1
9.40am – 10.30am	Lesson 2
10.30am – 10.50am	Morning Break
10.50am – 11.40am	Lesson 3
11.40am – 12.30pm	Lunch
12.30pm – 12.40pm	Registration
12.40pm – 1.30pm	Lesson 4
1.30pm – 2.20pm	Lesson 5
2.20pm – 3.00pm	Lesson 6

The Lunch Break

Children have two options:-

- 1 They may bring a packed lunch, which is eaten in the dining hall.
- 2 They may purchase a school meal, which is eaten in the dining hall.

School meals are paid for by using the school's biometric system.

The biometric system uses a person's finger print to identify him/her. Once a person's finger print has been scanned, the information is stored in a computer as a 16 digit code. This information cannot be accessed by anyone other than the school and it cannot be released to any other organisation.

Payments are made by parents, online, which helps to reduce administration and cash handling in our schools, and to enable students to reduce the amount of cash they carry to school.

For the payment of school meals, each student has an account; the parents are then supplied with log in details. This then gives you access to view the current balance, food purchased and upload monies onto the account. This account is also used for school events and trips.

Once your child is in school and has had their fingerprint scanned, the school will then supply you with log on details.

Children who bring their own packed lunches may also purchase additional items using the biometric system.

The system is very quick and cuts down queuing time.

Eating a lunch is not optional. We insist that every child eats lunch. If we become aware of your child not doing so, we will contact you to discuss the matter.

Lunchtime supervision is provided by Supervisory Assistants and a member of the Senior Team is always available.

Children are not allowed to leave the school premises without school's permission.

In wet weather, supervised areas will be available. All children have access to Active Play.

PLEASE NOTE: If you require your child to leave school within the school day, you must contact school beforehand in order to seek permission.

SCHOOL UNIFORM

All children must wear the school reversible rain coat and/or outdoor fleece to and from school. This is the only coat that is allowed to be worn for school and must be brought to school every day unless otherwise informed by us.

We will not insist that school coats are brought to school after the summer half term break, but the decision as to whether or not your child does so is at your discretion. However, if children are to attend an out of school visit at any time (including local visits such as Gosforth Library), they must have with them their school coat or they may not be allowed to attend the visit.

If a child arrives at school not wearing the correct school uniform, he or she may face sanctions.

We expect children to come to school looking tidy and presentable. The wearing of jewellery and makeup is forbidden, including on 'non-uniform days'.

Please ensure that any ear piercings are completed at least 4 weeks prior to the start of school in September (to allow the piercing to establish), as the wearing of ear rings is not permitted in school. Gel nails and nail varnish are also banned.

Watches are of course perfectly acceptable. We reserve the right to decide what is a reasonable style and colour of hair. No avant garde, e.g. shaved partings, stepped or patterned haircuts or shaved lines in hair, are allowed.

If you wish for your child to wear religious head wear, it must be plain black or navy blue. If your child has medium/long length hair it should be tied back.

Mobile phones should be switched off and not be visible in school. Smart Watches should not be worn in school.

All students require the following main uniform items:

- School reversible rain coat and/or outdoor fleece with badge*
- Navy polo shirt with badge*
- Navy round neck sweater with badge*
- Black school trousers or black school skirt which should be of a traditional school skirt design and must not be too tight or too short (round about knee length is acceptable)
- Black, plain, waterproof shoes (no logos, patterns or colour). Trainers are not permitted. Shoes with Velcro straps are fine
- Grey, Black or White socks or plain tights (not patterned)

- Navy school backpack with badge* or any unbranded plain navy backpack

All students require the following PE / sportswear items:

- Royal blue polo shirt with badge*
- Any unbranded navy shorts or navy tracksuit bottoms or navy leggings
- Royal blue sweatshirt with badge*
- Sport socks
- Training shoes with non-marking soles

* *These items are available from the uniform supplier, as they carry the school badge, alternatives may not be worn.*

If pupils wish to wear religious head wear, it must be plain black or navy blue.

We reserve the right to determine suitability for school.

We ask for your co-operation in not allowing your child to wear denims, canvas trousers, jeggings or trainers for school. Plain, black boots can be worn only if the weather is poor during the winter. *Please ask before you buy clothing items if you are in any doubt.*

All clothes and personal property must be marked with the child's name - this makes finding lost items so much easier - and surprisingly most children do tend to lose things at some point in their school lives!

Additional items may be required for some extra curricular activities e.g. Football boots or mouth guards. Children and parents will be notified if these items are required.

It is expected that all children will attend lessons with the basic equipment:-

Blue or black pen, green pen, pencil, eraser and ruler. Other useful equipment: pencil sharpener, coloured pencils. We supply all children with a school Planner which they must bring with them to school every day.

Children should carry a Great Park Academy backpack, which can be purchased at the same time as uniform items.

HOW IS ACHIEVEMENT REWARDED?

We believe that the children need to have progress and achievements recognised and that they should feel proud of their accomplishments.

We will ensure that individual achievement, both in and out of school, will be acknowledged in a variety of ways. Public recognition of success is given in tutor groups and more widely in whole school assemblies.

Within our Praise Code we place great emphasis on rewarding the children who perform well on a lesson by lesson basis.

In addition, recognition and rewards are given for many other noteworthy reasons and children can earn certificates, praise post cards, gift vouchers, golden book entry and special treats.

LEARNING AND BEHAVIOUR

Good and appropriate behaviour is essential in any school. We see our role as one, which compliments that of the caring home, in which clear boundaries are set and based on fairness and consideration for others.

Good behaviour leads to:-

- * The creation of a safe and secure environment for all.
- * The creation of a positive learning environment.
- * A raised awareness of the importance of self-discipline.

Consequences for Inappropriate Behaviour

If children misbehave, there are consequences

- **C1** – Verbal warning
- **C2** – Second verbal warning
- **C3** – Given if similar behaviour persists or immediately if behaviour warrants it. An accumulation of C3s within a school week will lead to detention and / or additional sanctions.

Detention may also be given, at the discretion of a senior member of staff, for other reasons, such as failure to complete homework. Children and parents/carers will be notified of detentions, which may take place at lunchtime or after school.

- **In School Exclusion** – Isolation within school.
- ***Fixed period exclusion – Fixed period exclusion will be administered if a particular offence or offences are deserving of such disciplinary action.***
- **Permanent exclusion** – Permanent exclusion will be considered when appropriate.

Please note that inappropriate behaviour of children on the journeys to and from school may be dealt with by school.

HOME-SCHOOL AGREEMENT

The Home-School Agreement can be found in your child's Diary & Planner. We would very much appreciate it if you discuss this with your child and sign it.

What is the Diary and Planner?

All children are expected to have their diary/planner when in school. It is an important means of communicating with children and parents/carers. It is also designed to help with planning and organisation.

Each week, tutors will check planners. We ask that you also complete a weekly check and indicate that you have done so by signing it in the appropriate space.

Should your child's planner be lost or damaged there will be a replacement cost to you.

OTHER IMPORTANT INFORMATION

Child Safeguarding

We are obliged to report any relevant information relating to child safeguarding to the appropriate authorities. The school has a designated person with the responsibility for coordinating child safeguarding issues. The Designated Safeguarding Lead, with responsibility for child protection issues, is Katherine Billingsley. Please refer to our website for our Safeguarding and Child Protection Policy.

What Responsibility Has The School For The Safety Of Children?

During the course of the school day, all staff are responsible for the safety of children while they are on the school premises or when accompanied on outings.

Collection of children and failure to collect children on time

Great Park Academy is committed to ensure that all children are discharged from its care in a timely and safe manner.

Before and After School Child Care

From Monday to Friday we run an **Early Bird Club** in school. It begins at 8.00am and finishes when the bell goes for registration at 8.25am. This provides children with an opportunity to play games and join activities in an organised, happy and friendly environment, before school starts. The club runs throughout the school year, on all days that children are in school.

After school, children should be collected at 3.10pm.

After school we do run an 'in school' club until the following times:

- Monday and Thursday – 4.00pm
- Tuesday and Wednesday 3.45pm
- Please note - there is no club on a Friday.

An alternative is to use the **Junior All Stars After School Club** to look after your child. This is a private company which operates within our premises and looks after children up until 5.45pm, Monday to Friday. The cost for one session of this child care is £10.00 (subject to change). If you are interested in this option, please contact juniorallstarsgreatpark@gmail.com or telephone Cally on 0734 0393577.

I am aware that many of you do not wish to collect your child from school, but allow them to make their own way home. However, in order to ensure adult supervision

for those children who are to be collected, we have agreed the following with the Director of the Junior All Stars After School Club:

Children not collected on time

If your child has not been collected by 3.45pm on Monday to Thursday, or 3.10pm on Friday, he/she will be taken by a member of Great Park Academy staff and placed with staff in the **Junior All Stars After School Club**. **Subsequently, you will be sent an invoice by the club.**

Upon arrival to collect your child from the Junior All Stars After School Club, you should telephone 0734 0393577. A member of staff will bring your child to the entrance / exit (adjacent to the car park) and hand him/her over to you or the appropriate designated person.

If you have not collected your child by 5.30pm, the Junior All Stars After School Club staff may initiate emergency procedures. This will involve the staff contacting Newcastle Social Care. If this is not successful, the staff are instructed to call the police. These procedures are not in place to penalise you, but to ensure that your child is safe at all times.

This arrangement does not apply to those children who are attending organised school clubs and activities. In these circumstances, you will make your own arrangements.

Please note, that on the final day of each school term, school closes at 12 noon. **The Junior All Stars After School Club will not operate on these days.**

Inappropriate Use of Social Networking Sites

As you may be aware, the internet has become a powerful tool with which to connect with others and share ideas and opinions. In recent years, social networking sites have grown in popularity and many people use them to communicate with family, friends and others. Unfortunately, there are people who use social networking sites to cyber-bully or harass others.

It is not acceptable to use social networking sites to openly criticise and make unsubstantiated, damaging comments about the school or any members of our staff or children.

Current laws such as the 1988 Malicious Communications Act, 1997 Protection from Harassment Act and 2003 Communications Act can be used to protect individuals from malicious and threatening posts made on the internet. The victims might also

choose to bring civil actions for defamation or slander. Great Park Academy wish it to be known that all necessary action will be taken to deal with any material posted on such sites that is, in our opinion, distressing, alarming or harassing or in any way breaches the rights of the members of our school community.

We are sorry that it has been necessary to address this matter as we understand that the overwhelming majority of you would never become involved in such activity.

Curriculum

The Assistant Principal is responsible for various subject areas of the school curriculum and guides and advises teams of teachers.

School Assemblies

We hold assemblies, on a weekly basis, as a whole school and/or in classes and try to use this time to offer a meaningful and thought-provoking experience. Assemblies are designed to reflect the values of the school and to encourage the children to become better informed citizens. We hope that the children are both stimulated and challenged by some of the issues they are invited to consider and that they may, on occasions, be spurred on to take part in the many charitable causes we support. To reflect the diversity of our school community, speakers and materials for assemblies are drawn from a wide range of sources.

Special Educational Needs and Disability (SEND)

Children with special educational needs range from those who simply require a little extra help or guidance, to those who need one-to-one specialist support. Our aim is to enable all children to participate as fully as possible in all aspects of school life.

Most SEND provision comes from class teachers adapting activities when necessary to ensure that every child is included and making progress. In addition, these teachers are supported by the HLTA and LSA. Specialist support from other appropriate agencies is also accessed when necessary.

Emotional, behavioural, social and academic needs are addressed within the school system and targets are set for individual children with specific needs.

We regard the development of independence, self-confidence and self-esteem as being central to our support role.

Will My Child Have Help If English Is Not His/Her First Language?

Our school community is fortunate to include children and families from many different countries and cultures.

Support is offered to these children when we feel it is appropriate.

It is our experience that those with English as an additional language make very good progress and are able to participate fully in all aspects of school life.

What Opportunities Does the School Provide for Gifted and Talented (GT) children?

The cohort of GT children, who are identified through quantitative data and teacher nominations, are given additional opportunities. There are many enrichment projects throughout the year. These might include visits, competitions, the opportunity to hear visiting speakers, master classes and links with universities.

Will There Be Opportunities For Consultations With Teachers?

Yes. At present there are two school review days and an annual written school report for each child. On school review days you will have the opportunity to discuss relevant issues with your child's form tutor. However, if you wanted to discuss something in particular with a subject teacher, please telephone school and we will make the necessary arrangements. The sooner we are made aware of any issues, the sooner we can address them.

If you wish to speak to a member of staff regarding any issue, please contact school to make an appointment as it is highly unlikely that someone will be available to meet with you if you simply "pop in".

Homework

Homework is an integral part of every child's general academic development.

Purposes:

1. To give opportunity for further study.
2. To complete work started in school.
3. To establish good work habits for private study.
4. To reinforce work done in class for those of all abilities.
5. To give the opportunity to extend learning.

We currently run several homework clubs – before the start of school, at lunchtime and after school.

Broad Guidelines

1. In Year 5, in the core subjects, a maximum requirement of 30 minutes per subject is expected per week. In foundation subjects, homework will be given at the discretion of the subject teachers. **All children should be reading at home every day and getting their reading record signed regularly.**
2. The format of the homework will not necessarily always be of written format. It might include practical tasks, gathering information, preparing a talk, reading etc.
3. It is expected that completed homework should always be of a high standard relative to a child's ability. In order to achieve this, parent/carer co-operation is essential.
4. Children should record the following information in their Diary and Planner: - subject, work set, date set, and date to be returned.
5. A letter will be sent home if your child regularly fails to return homework. Sanctions may also be given.

Form tutors check the Homework Diary and Planner on a weekly basis. Teachers and parents have a space to write comments. Please check and use your child's Homework Diary and Planner. We ask parents and carers to sign this at the end of each week.

With homework, we rely on parental support. You can help by:-

- ✓ Ensuring that your child has a set area for completing work at home.
- ✓ Taking an interest in your child's tasks.
- ✓ Checking that the work has been completed.

Are There Clubs And Societies My Child Can Join?

In addition to clubs and sporting activities, there is a great deal of activity outside lesson time. We have an activities and enterprise week at the end of each academic year.

Can My Child Bring A Bicycle To School?

Yes. Bicycles should be parked in the designated area. Secure padlocking is advised. We strongly advise cyclists to wear helmets.

Who Is Responsible For Property Brought To School?

Children are responsible for their own property. Therefore, books and materials required during the course of the school day should be carried in the school backpack. Occasionally things are lost, and while every effort is made to return property to its rightful owner, we are not always successful in doing so. When personal items are marked with the owner's name, this becomes a more straightforward matter.

Should We Have Insurance?

We strongly advise you to consider taking out insurance cover against loss of property and injury to your child. Under the budgetary arrangements of local financial management, the school is not able to budget for ex-gratia payments in respect of loss or damage to children's personal property.

What Is the School's Charging Policy?

The Academy Advisory Group's policy on charging meets the requirements of the Education Act 1988. In essence it means that no charges will be made for any cost of education provided as part of the National Curriculum or as part of a syllabus leading to public examination. No child will be debarred from taking part in any activity other than optional extras because you are unable to make any contribution. Please be aware, however, that some visits may not be able to go ahead if sufficient contributions are not received. In appropriate cases, the Academy Advisory Group may decide to undertake the costs of participation from the school's own resources. On residential visits, cost of board and lodging will be passed on in full to you, except where subsidies are provided by the Local Authority or Academy Advisory Group. There is no charge for school music activities when an activity is taken by a school member of staff. However, you will be directly charged by NEMCO (North-East Music Cooperative) for any lesson or activity taken by one of their peripatetic instrumental teachers and for any instrument maintained by NEMCO.

The school reserves the right to ask you to pay some or all the cost of avoidable damage or loss caused by your child.

What Is The School Policy Regarding Mobile Phones?

We require children to be reasonable and helpful. These items are extremely popular but they have potential nuisance value. These machines must be turned off during the school day and not be visible during this time. We appreciate that a child may wish to contact a parent by mobile phone at the end of the school day. We ask that this is done outside of the school building, or in the reception area if a child is waiting inside school to be collected. On these occasions mobile phones must not be used

for any other purpose. Infringement of these simple rules will lead to confiscation until the end of the school week, or until a designated adult collects the phone. Further infringement could lead to a complete ban. School will not accept liability for the damage and/or loss of such items.

What Should I Do If I Wish To Complain About Any Aspect Of School Life?

Most problems can be settled through discussion at a fairly informal level, but should this fail, there is a procedure that should be followed. You should contact: **The Company Secretary, The Gosforth Group, Newcastle, NE3 2JH**, in writing, who will then start a record sheet of the complaint and if necessary arrange for the Local Advisory Group to discuss the matter.

What Should I Do If I Know My Child Is Going To Be Absent From School?

When you know that your child is to be absent on a given day, please inform the school, preferably by telephoning school reception (telephone 0191 2559170) before 9.30am on the first day of absence. A 24-hour answering service is available on this number. On returning to school, your child must bring a signed and dated note from you, and give this to his/her tutor. If we have not received this from you, you may receive a visit from our Attendance and Welfare Officer.

I'm sure you will agree that absence from school may have a negative impact upon a child's education. School is no longer able to authorise absence from school for the purpose of taking a holiday.

Please note that if you do decide to take your child out of school in school time for this purpose, legal sanctions may be taken against you.

Schools are required to distinguish between authorised and unauthorised absence for all children of compulsory school age. Authorised absence covers absences that are unavoidable, such as sickness, religious observance and dental/medical appointments. A student will be removed from the school roll if his/her absence exceeds the agreed period. Parents must note, that if we are oversubscribed, it may not be possible to readmit a student on his/her return.

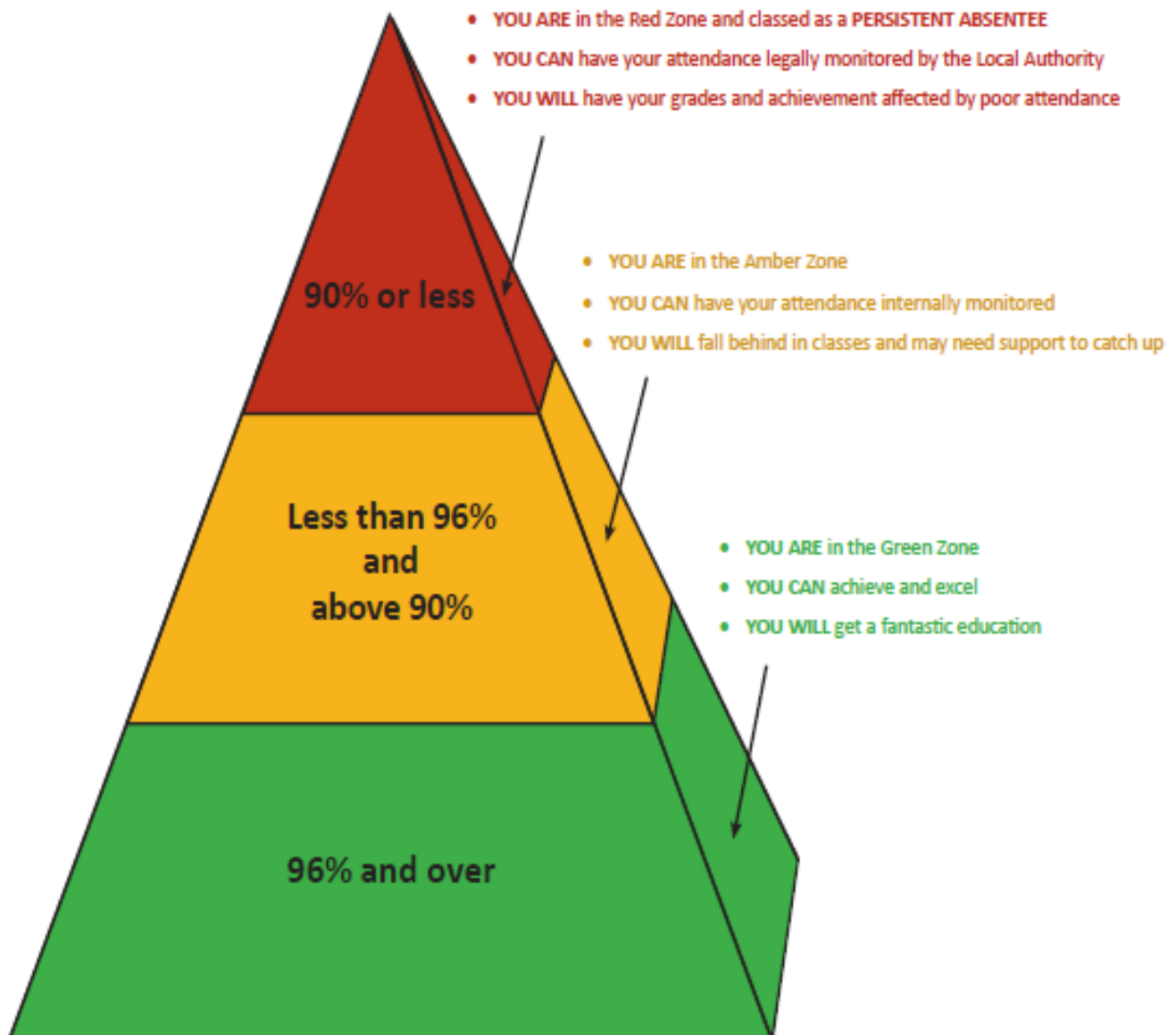
School attendance is a legal requirement and recent government instructions make it clear that there are significant penalties should a child be absent from school for unauthorised reasons.

In the case of a prolonged absence owing to illness, we will make arrangements, when appropriate, for school work to be provided.

What If My Child Is Persistently Late For School?

School begins at 8.25am. Children should be in their classrooms by then. Late arrival is recorded. Persistent lateness will be dealt with by school and may result in sanctions against the child and/or parents/carers.

PRAISE CODE - ATTENDANCE PYRAMID



Lateness Each Day = lost learning over a school year

- 5 Minutes Late = 3 days lost!
- 10 Minutes Late = 6.5 days lost!
- 15 Minutes Late = 10 days lost!
- 20 Minutes Late = 13 days lost!
- 30 Minutes Late = 19 days lost!

Attendance Impact on Grades

- Over 94% Attendance = A very good chance of achieving all 9 - 4 Grades
- 90% Attendance = Less than 50% chance of achieving 9 - 4 Grades
- 88% or less = Less than 30% chance of achieving 9 - 4 Grades

Impact on Future Earnings

- 1 - 4 GCSE's can increase your wages by 17%
- 5 or more GCSE's can increase your wages by 41%
- Improve your attendance by 1% and you could see a 5 - 6% improvement in your attainment

What If My Child Is Ill At School?

If your child becomes ill while at school, first aid is available from designated First Aiders. If they or a senior member of staff feels that your child is too unwell to remain in school, you will be contacted. In more serious cases of illness or accident, you will be informed as soon as possible and, if necessary, the emergency services summoned.

The school should be informed of any health problems from which your child suffers e.g. diabetes, asthma, epilepsy, and of any condition that will affect participation in school activities.

Use of Medication in School

The guidelines on the use of medication in school are outlined below.

The policy aims to promote the safety of all children whilst protecting their access to education.

It is vital that the school has all updated telephone numbers including emergency numbers. Please ensure that the school is made aware of your child's medical history - bearing in mind that confidentiality is assured.

Emergency Messages

In the event of an emergency, the office staff will endeavour to find a child quickly, to deliver an urgent message from a parent or carer.

Managing Medication in School

As per our policy please be aware: - **Non-prescription medication**

Great Park Academy will not give out to pupils any non-prescribed medication such as painkillers, even if their parents give permission.

In effect, this would be prescribing medication and no one is qualified in school to do so. Pupils may need to go home to be treated if necessary. The only exception to this rule is when students are out of school on a visit, away from medical assistance, and only in an emergency (Section 3 (5) of the Children Act 1989). Here, specific members of staff can administer non-prescription medication to pupils, if their parents have signed and consented to this on the EV Form. Staff are advised that in such emergency, if possible to contact parents by phone to explain the nature of the emergency and to check again if it is okay to give their child non-prescribed medication in this situation. This may not always be possible.

At Great Park Academy, due to the age of the children, we request that parents/carers do not give children non-prescription medication to bring to school.

Prescription Medication

The school is under no obligation to administer prescribed medication to pupils. If we choose to do this it will be because there is a clear benefit to the student in question. Prescribed medications can be administered within school following the guidance and protocols identified in our Managing Medications Policy (on our website) and on the completion of the 'Medication in School Care Plan'. If parents have difficulty getting their child's prescription into the school they can arrange for the doctor to prescribe a split prescription, one for home and one for school. They can also arrange for a local chemist to make up and deliver the prescription. Most prescription medicine e.g. antibiotics can now be taken outside of school hours. Parents need to arrange an administration schedule to suit this with their GP. Parents will need to complete a 'request for child to carry his/her own medicine form (form 7).

If a parent asks the school to administer prescribed medication to their child, school will refer the parent to the School Nurse who will discuss with them the circumstances and ascertain if it is both necessary and appropriate that the school agrees to do this. It may be that school will require parents to complete a Medication in School Care Plan for their child.

DATES OF SCHOOL TERMS AND HOLIDAYS 2023 - 2024

The new school year begins for all children on Tuesday 5 September 2023 at 8.25am.

Autumn Term Tuesday 5 September – Friday 22 December
Half Term Monday 30 October – Friday 3 November inclusive

Spring Term Monday 8 January – Thursday 28 March
Half Term Monday 19 February – Friday 23 February inclusive

Summer Term Monday 15 April – Friday 19 July
Half Term Tuesday 28 May – Friday 31 May inclusive

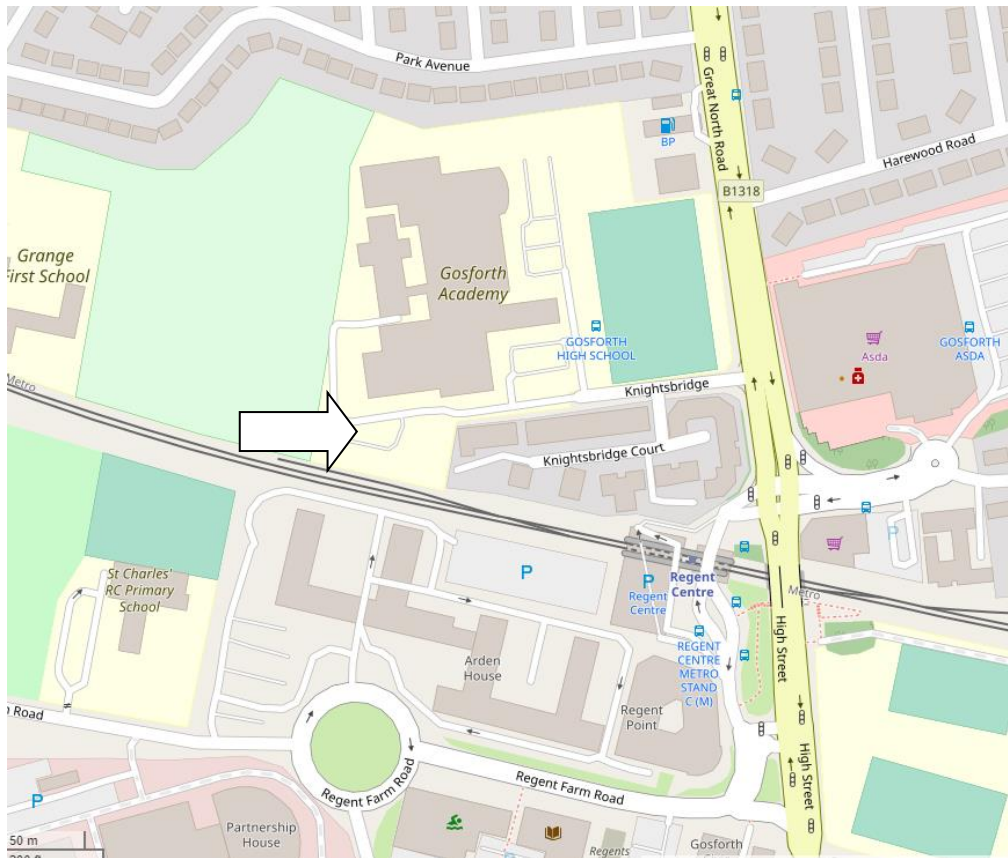
Please note that school is closed on Bank Holidays.

On the final day of each term, school closes at 12 noon.

The school will be closed on Monday 4 September as this is a designated staff training day. There will be 2 additional training days (probably in late September/early October and in the summer term), but these are yet to be confirmed.

*Details of school terms and holidays can be reviewed by consulting:
www.newcastle.gov.uk*

LOCATION MAP



Great Park Academy
Knightsbridge
Great North Road
Gosforth
Newcastle upon Tyne
NE3 2JH

Tel: 0191 2559170

Email: admin@greatparkacademy.org.uk

Website: www.greatparkacademy.org.uk

Great Park Academy



**Great Park
Academy**

'Create Your Future'